

E

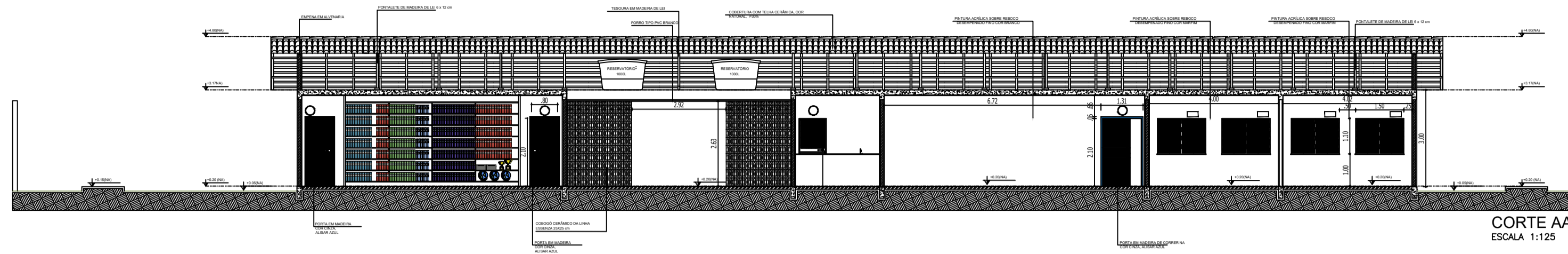
F

G

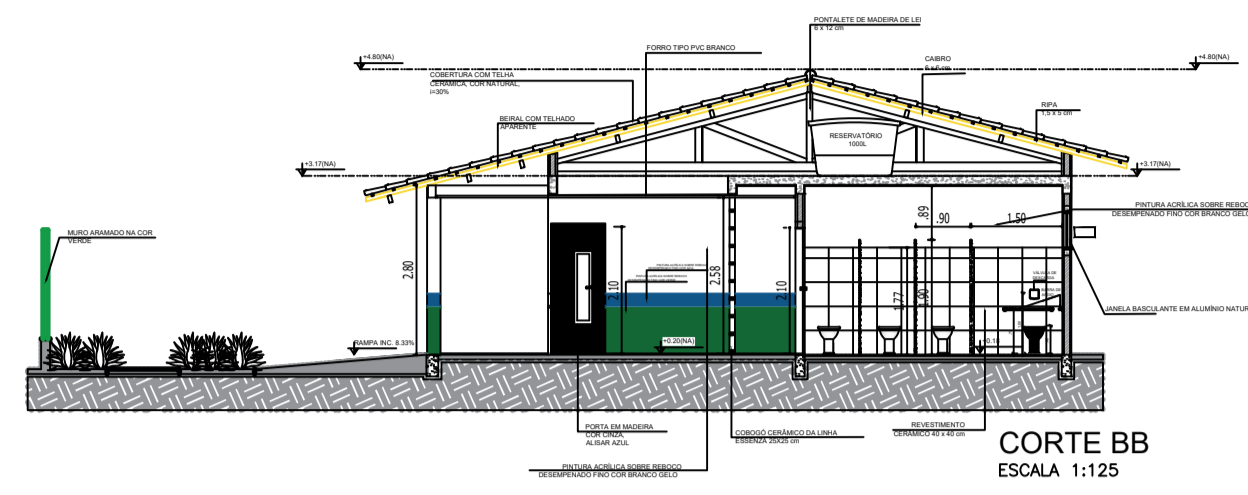
H

I

D

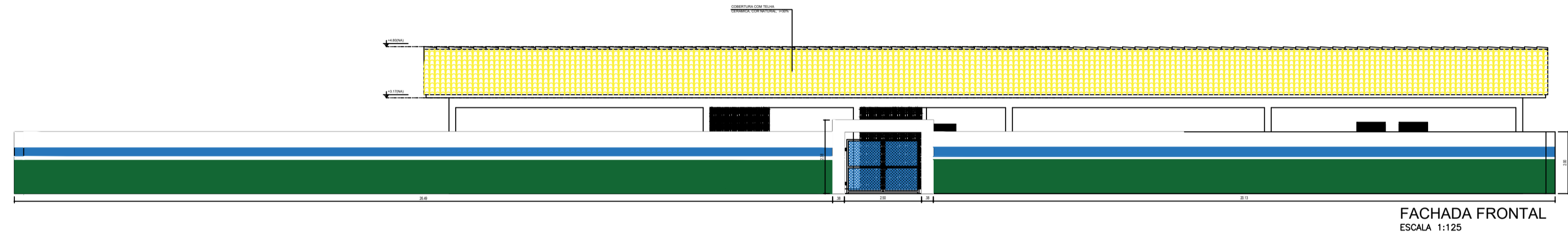


CORTE AA
ESCALA 1:125

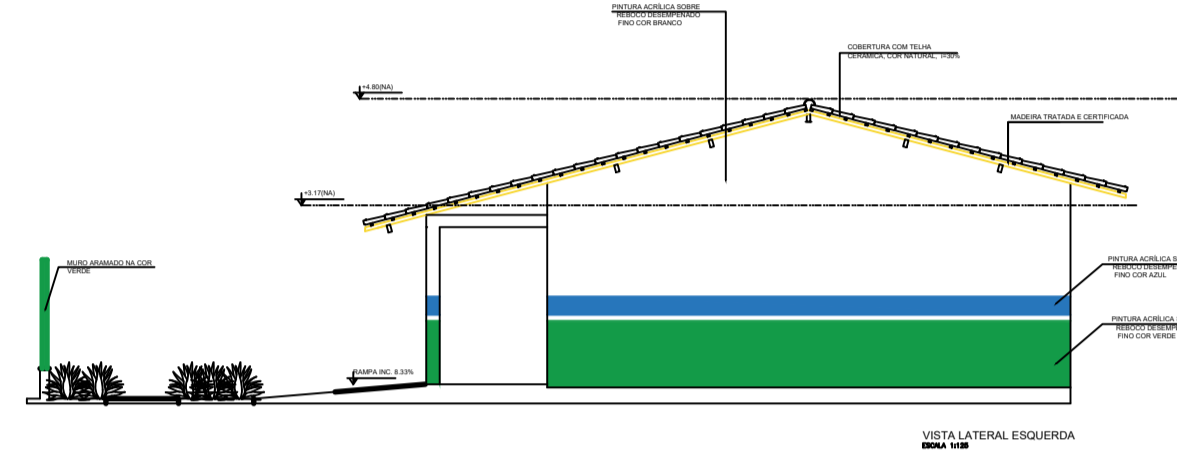


CORTE BB
ESCALA 1:125

C

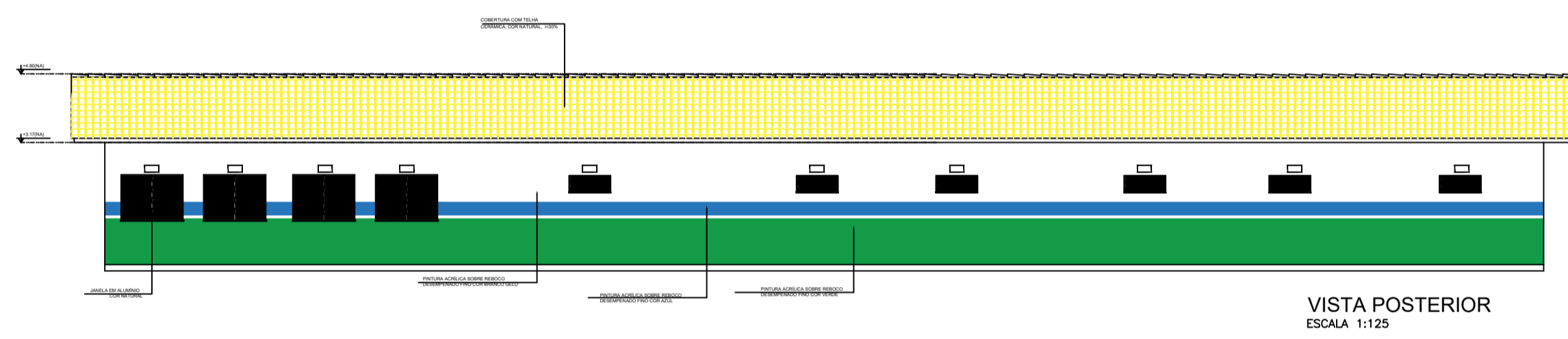


FACHADA FRONTAL
ESCALA 1:125

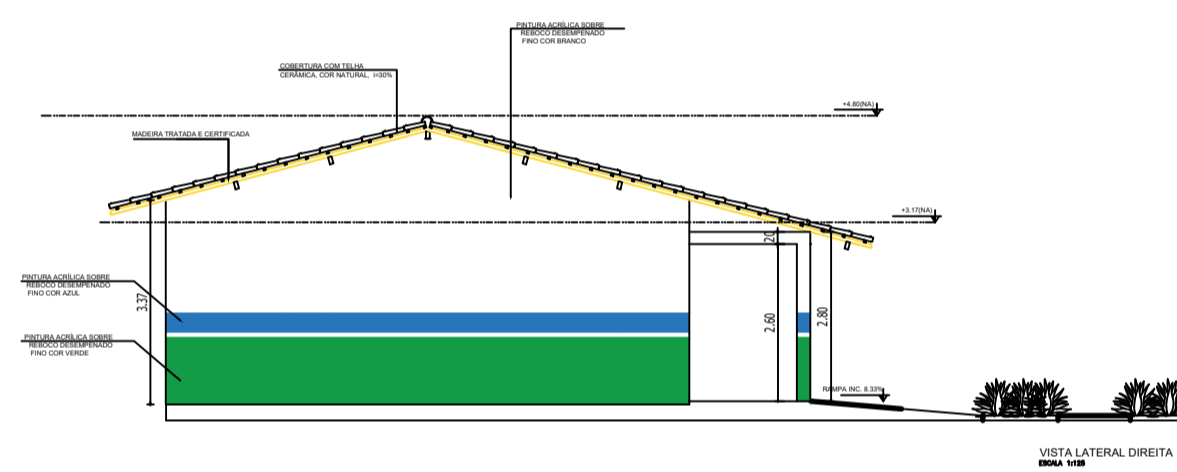
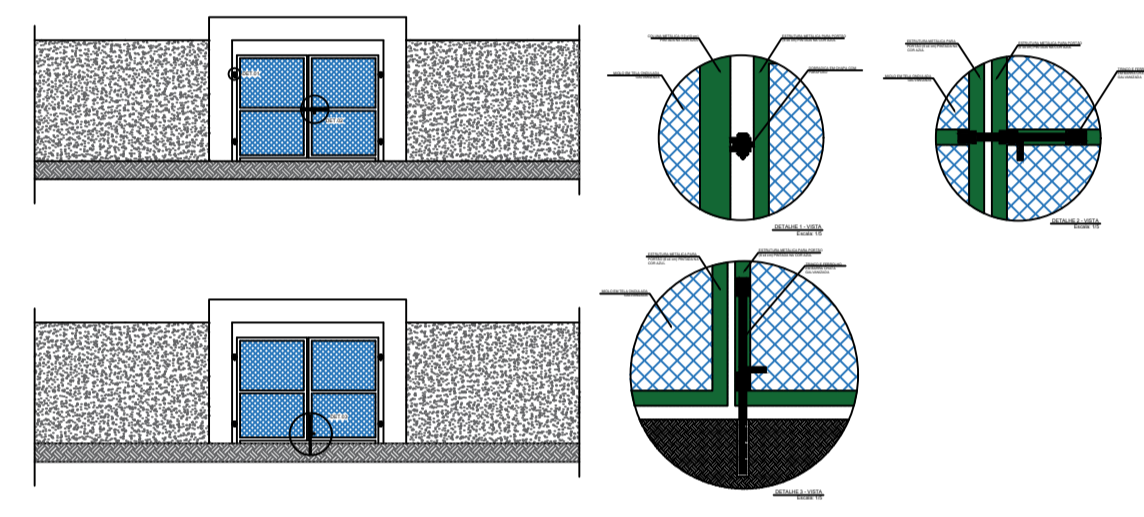


VISTA LATERAL ESQUERDA
ESCALA 1:125

B

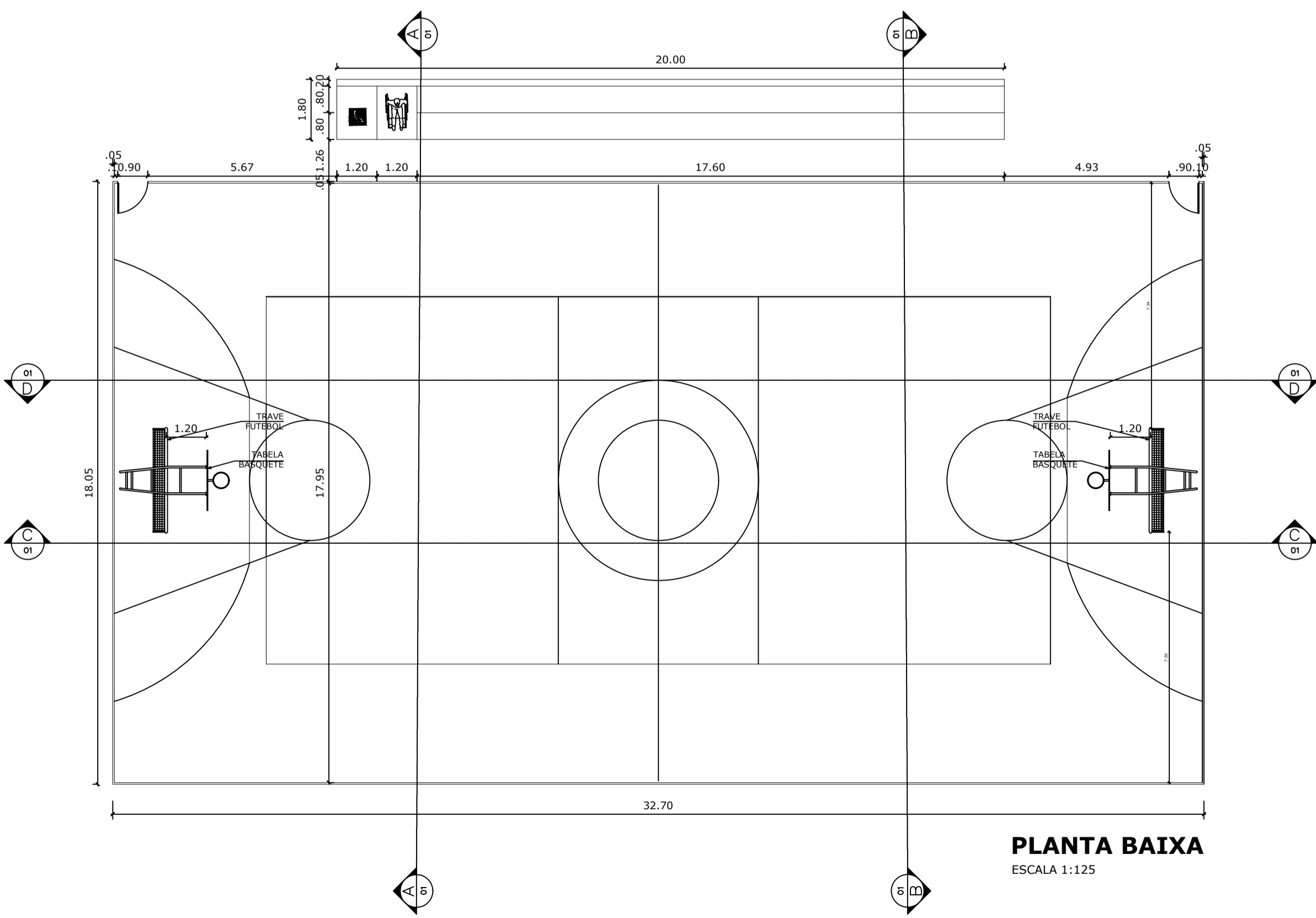


VISTA POSTERIOR
ESCALA 1:125

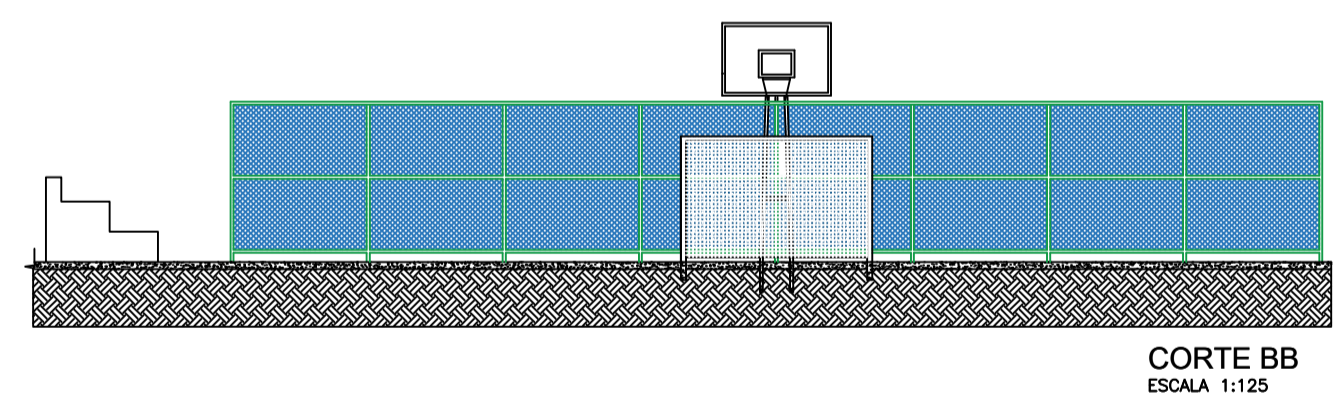


VISTA LATERAL DIREITA
ESCALA 1:125

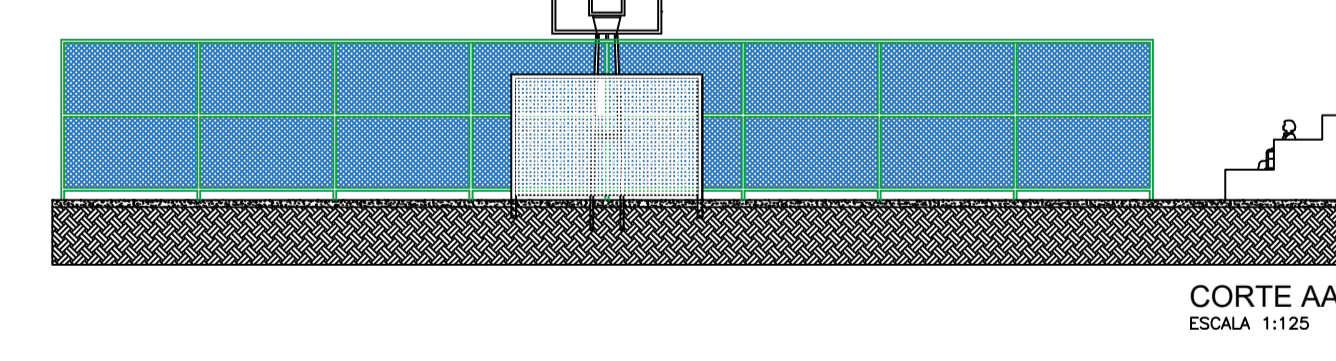
A



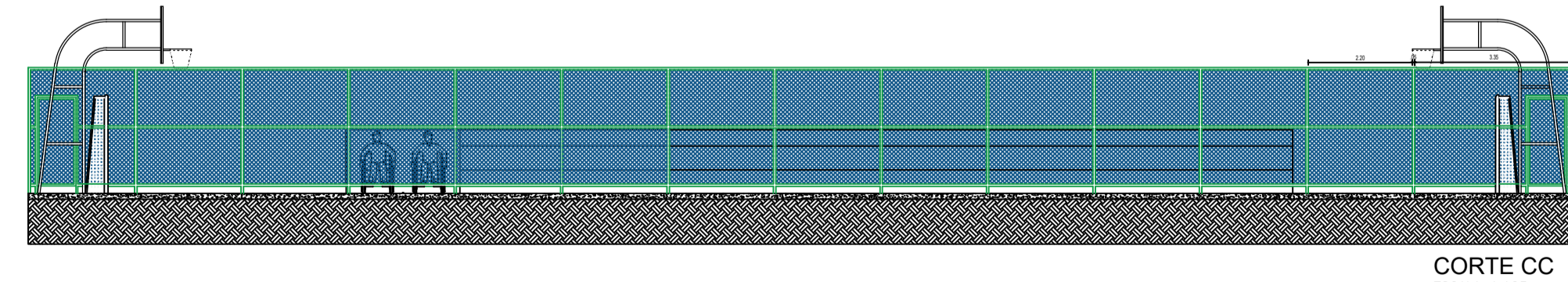
PLANTA BAIXA
ESCALA 1:125



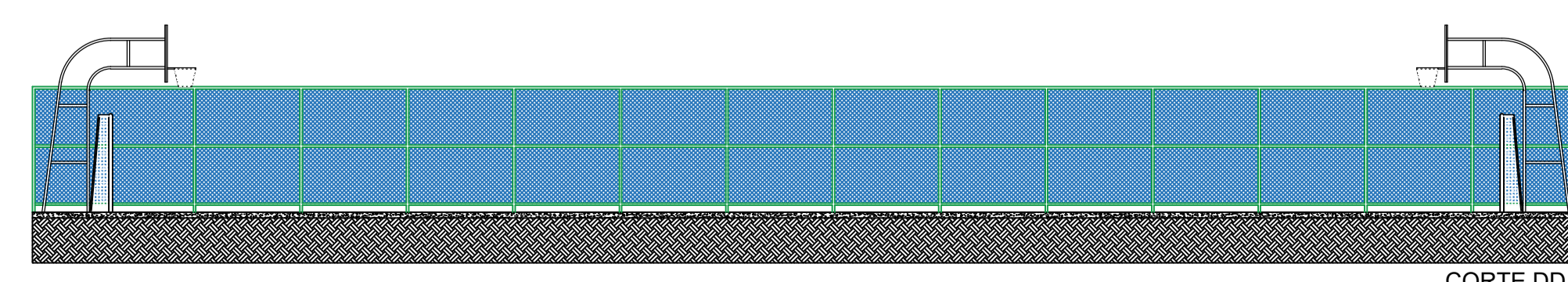
CORTE BB
ESCALA 1:125



CORTE AA
ESCALA 1:125



CORTE CC
ESCALA 1:125



CORTE DD
ESCALA 1:125

REV.	DESCRÇÃO
01	PROJETO ARQUITETONICO - CORTES, FACHADAS E QUADRA POLIESPORTIVA
PREFEITURA MUNICIPAL DE ICAPUI - CEARÁ	
TITULO REFORMA - ESCOLA MUNICIPAL PROF. LUIZ GONZAGA FERREIRA E QUADRA DE ESPORTES COMUNIDADE DE PEIXE GORDO - ICAPUI - CEARÁ	
VISTO	LOCAL PEIXE GORDO
	ESCALA INDICADA
	DESENHO KATIMIRLA LINO
	DATA NOVEMBRO/2018
	FOLHA 02/05